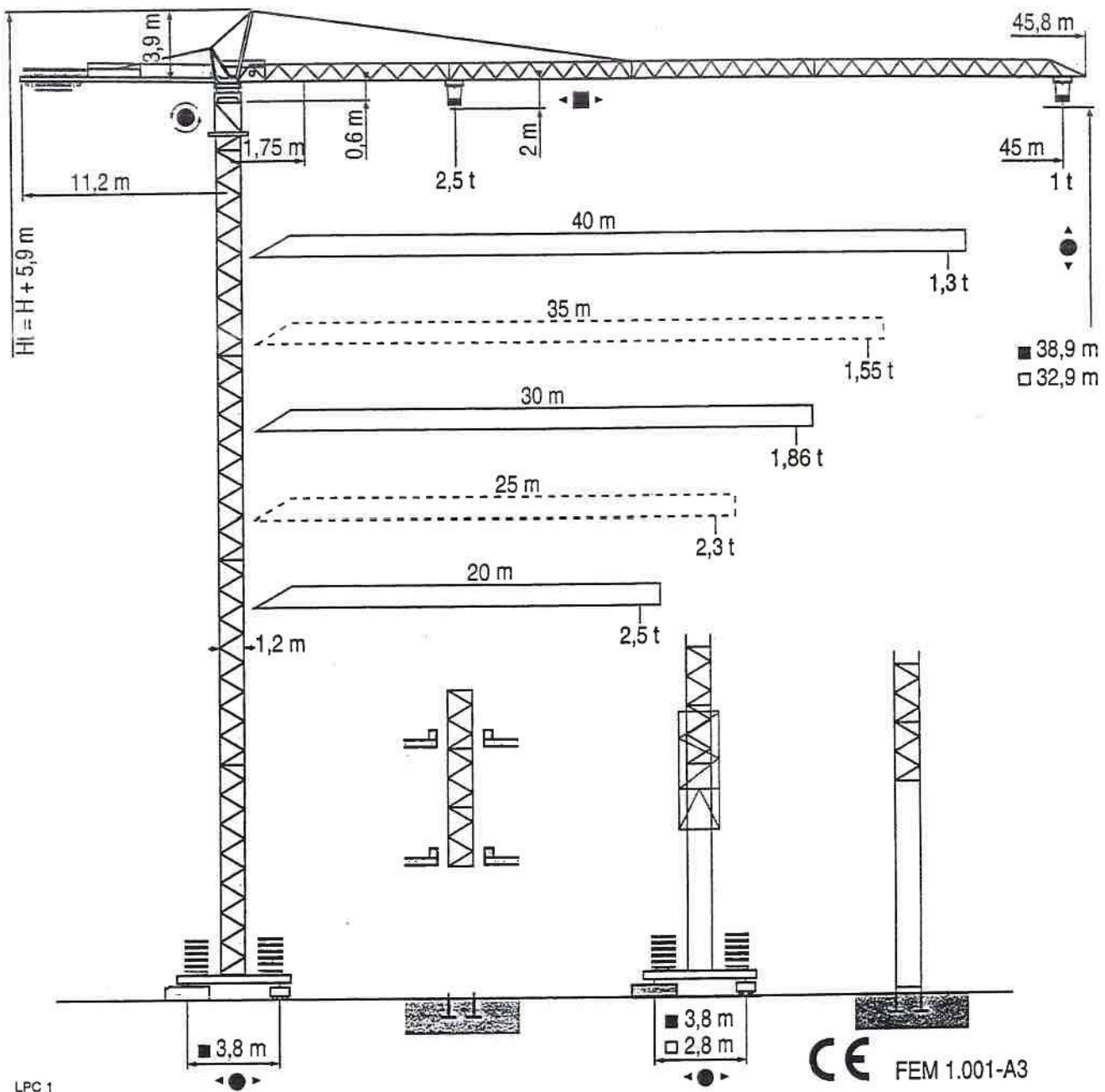


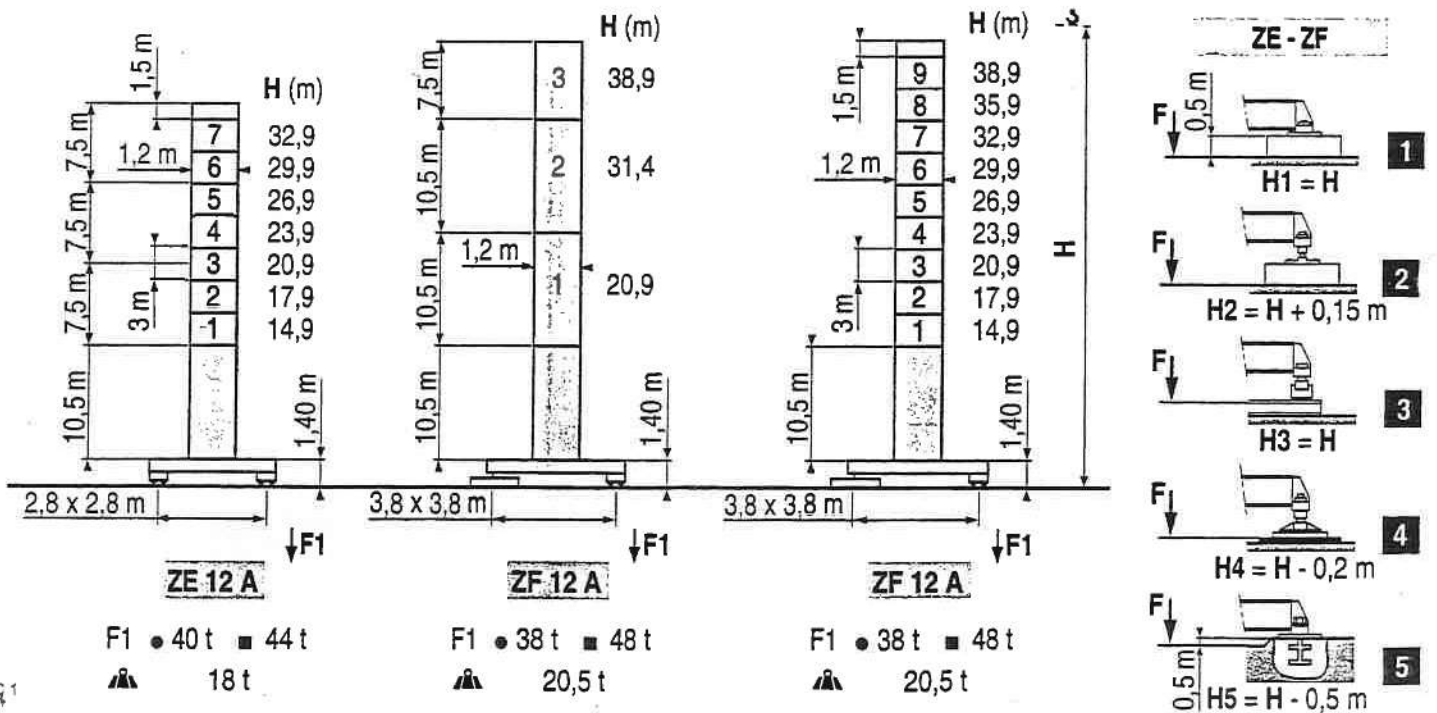
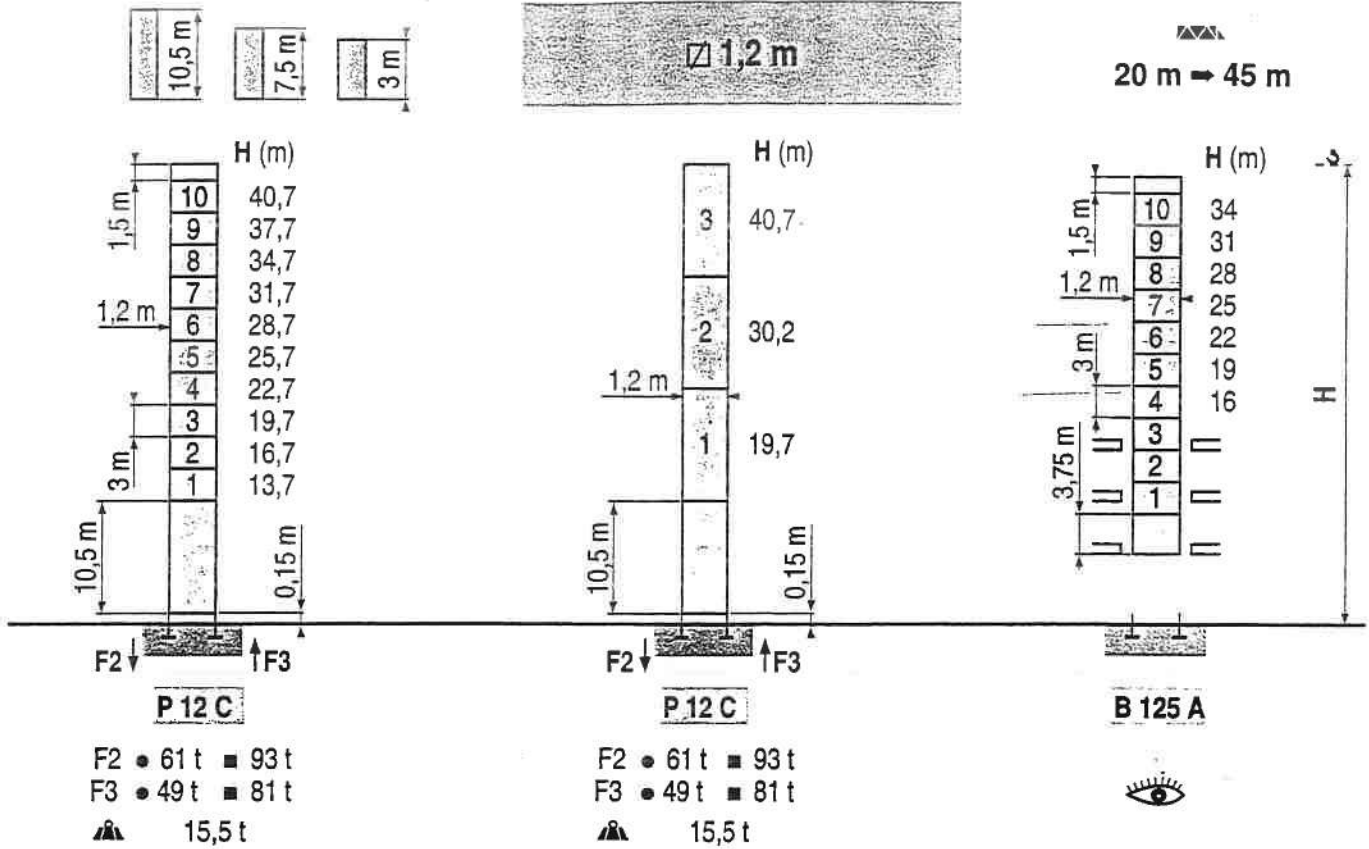
SP 65 A



LPC 1

CE FEM 1.001-A3





LPG 1

- 👁 Siehe Kletterkrane im Gebäude
- Reaktionskräfte in Betrieb
- Reaktionskräfte außer Betrieb
- ▲ Ohne Last und Ballast mit Maximalausleger und Maximalhöhe.

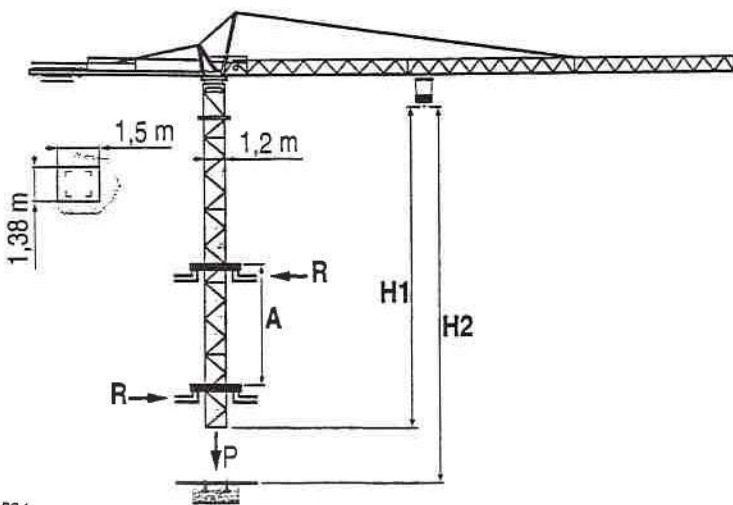
Curve di carico

| | | | | | | | | | | | | |
|------|--------|-------|-------|------|--------|------|--------|------|-------|------|------|------|
| 45 m | 1,75 ▶ | 20,92 | 22 | 25 | 27 | 30 | 32 | 35 | 37 | 40 | 42 | 45 m |
| | | 2,5 | 2,36 | 2,04 | 1,86 | 1,65 | 1,53 | 1,37 | 1,28 | 1,16 | 1,09 | 1 t |
| 40 m | 1,75 ▶ | 22,91 | 25 | 27 | 30 | 32 | 35 | 37 | 40 m | | | |
| | | 2,5 | 2,27 | 2,07 | 1,84 | 1,7 | 1,53 | 1,43 | 1,3 t | | | |
| 35 m | 1,75 ▶ | 23,19 | 25 | 27 | 30 | 32 | 35 m | | | | | |
| | | 2,5 | 2,3 | 2,1 | 1,86 | 1,73 | 1,55 t | | | | | |
| 30 m | 1,75 ▶ | 23,21 | 25 | 27 | 30 m | | | | | | | |
| | | 2,5 | 2,3 | 2,1 | 1,86 t | | | | | | | |
| 25 m | 1,75 ▶ | 23,24 | 25 m | | | | | | | | | |
| | | 2,5 | 2,3 t | | | | | | | | | |
| 20 m | 1,75 ▶ | 20 m | | | | | | | | | | |
| | | 2,5 t | | | | | | | | | | |

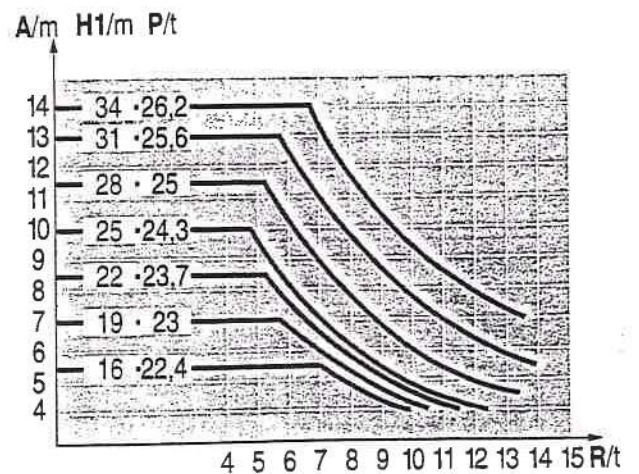
LPC 1

Gru in cavedio

B 125 A
















LPC 1









- A Distanza fra i telai
- H1 Altezza gru
- P Peso della gru (in servizio)
- R Reazione orizzontale

Meccanismi

| | |  |  |  | ch - PS hp | kW |  | |
|--|---------------|---|---|---|---------------|-------|---|--|
|  | 15 PC 13 | m/min t | 7 2,5 | 21 2,5 | 42 1,3 | 15 | 11 | 90 m > 90  |
| | 25 PC 13 | m/min t | 7 2,5 | 36 2,5 | 72 1,3 | 25 | 18,4 | 193 m > 193  |
|  | 3 D2 V5 | m/min | 21 - 42 | | | 3 | 2,2 | |
|  | RCV 40 | tr/min U/min rpm | 0 → 0,8 | | | 6 | 4,5 | |
|   | TVD 324 C1 | m/min | 26 | | | 2 x 4 | 2 x 2,9 | |

| CEI 38  | IEC 38 | kVA |  |
|--|--------|----------------------------------|---|
| 400 V (+6% -10%) 50 Hz | | 15 PC : 25 kVA 25 PC : 35 kVA | 84/534 - 87/405 |

LPC 1

-  Sollevamento
-  Distribuzione
-  Rotazione
-  Traslazione
-  Conforme alle direttive CEE 84/534 e 87/405 sul livello acustico
-  Consultateci

Réf. 1998.05 LPC 1

POTAIN

GRUPE 

18, Rue de Charbonnières, B.P. 173-F
69132 ECULLY Cedex
Tél. (33)04.72.20.20.20
Fax (33)04.72.20.20.00
<http://www.potain.fr>
E-mail : mkt@potain.fr

SP 65 A

Copyright.Reproduction interdite © POTAIN 1998

Deutschland
POTAIN GmbH Tel : 06.105.704.0
Italia
POTAIN S.p.A. Tel : 039.65.631
China
Zhangjiagang POTAIN Tel : 520. 877.1451