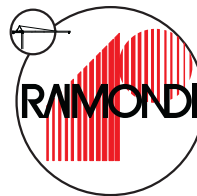




GRU DA CITTÀ - CITY CRANE
CITY CRANE - GRÚA DE CIUDAD
ГОРОДСКОЙ КРАН

ER291

RAIMONDI



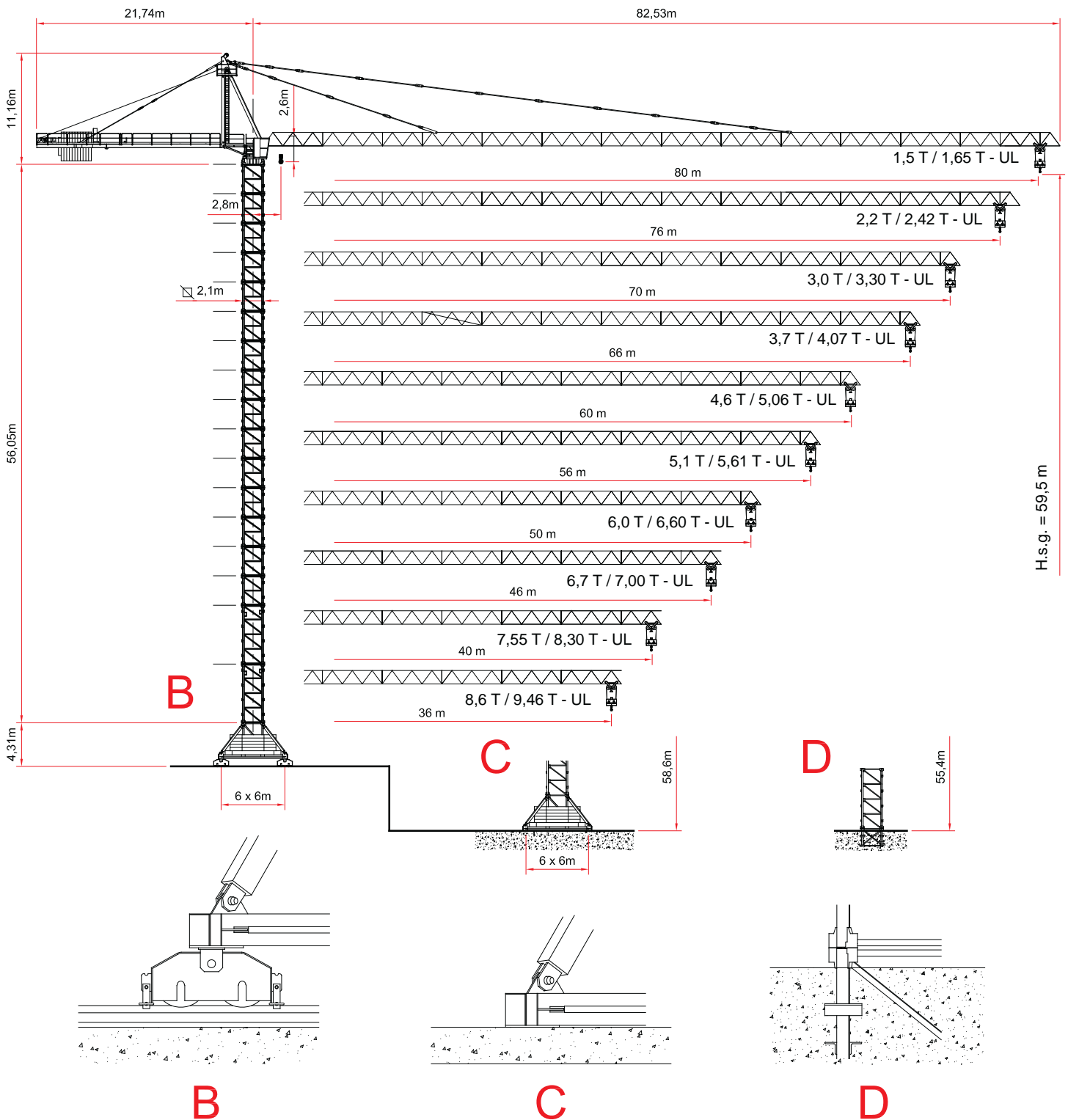
Scheda Tecnica
Technical Data Sheet
Fiche technique
Ficha técnica
Техническая спецификация



CARLO RAIMONDI fu Rodolfo S.p.A.
C.so Garibaldi, 253 - 20025 Legnano (MI) Italy
Telefono 0039.0331.548061 - Fax 0039.0331.450400
www.raimondigr.it



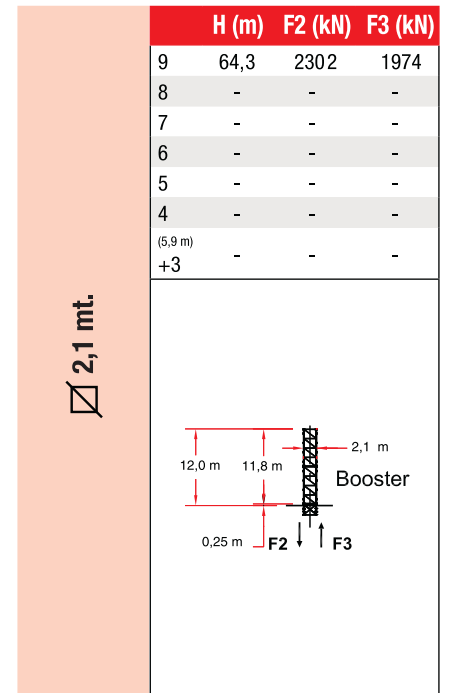
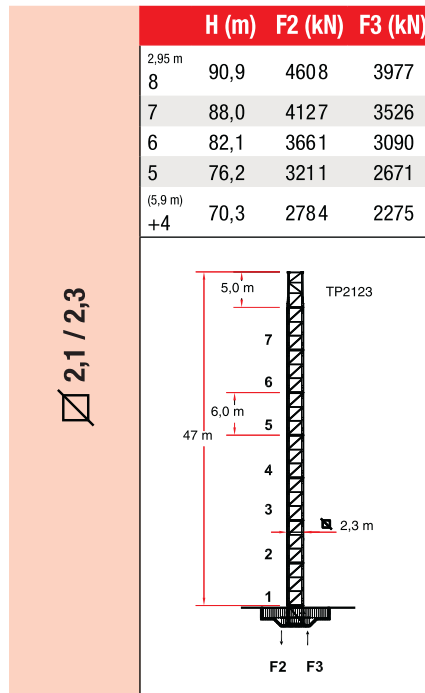
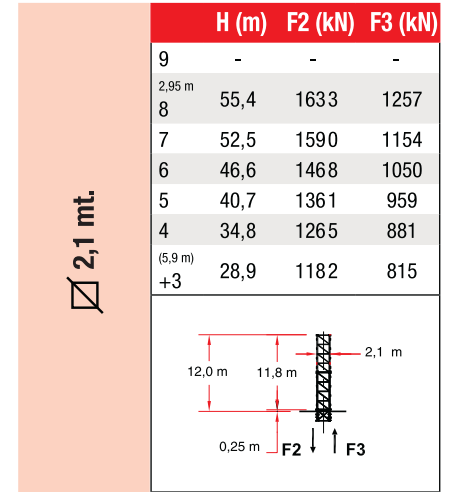
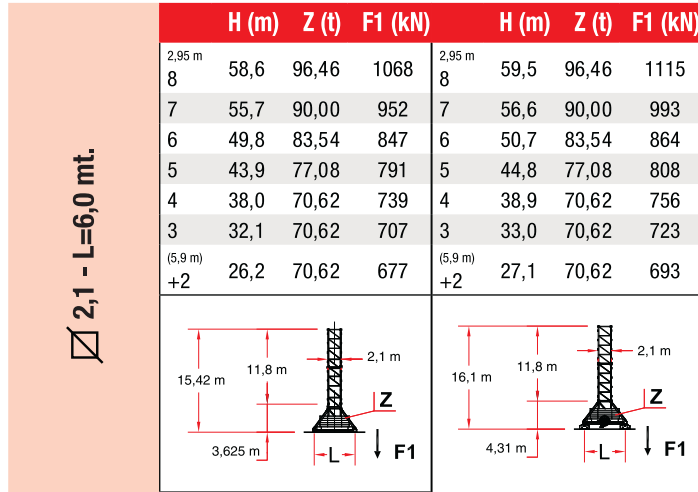
A4 FEM1,001



UL = ULTRALIFT CONTROL



ALTEZZA SOTTOGANCIO

HEIGHT UNDER HOOK - HAUTEUR SOUS CROCHET - ALTURA BAJO GANCHO - ВЫСОТА ПОД КРЮКОМ



PORTATA

LOAD - CHARGE - ALCANCE - ГРУЗОПОДЪЕМНОСТЬ

Portata max - Max s.w.l. Charge maxi - Alcance máx. Макс. грузоподъемность		 14000 Kg.										 7000 Kg.										
Sbraccio / Jib Portée / Alcance Вылет стрелы	m.	36	40	46	50	56	60	66	70	76	80	36	40	46	50	56	60	66	70	76	80	
Campo di portata max da Max s.w.l. range from Charge maxi de Rango de capacidad de carga máx. de Макс. Диапазон грузоподъемности от	a to à a до	23,5	23,4	23,2	22,9	22,3	21,9	20,2	18,4	16,2	13,4	36,0	40,0	44,2	43,6	42,4	41,5	38,0	34,0	29,1	23,4	
Sbraccio (m.) Radius (m.) Portée (m.) Alcance (m.) Вылет стрелы	13	14000	14000	14000	14000	14000	14000	14000	14000	14000	14000	7000	7000	7000	7000	7000	7000	7000	7000	7000	7000	
	16	14000	14000	14000	14000	14000	14000	14000	14000	14000	11331	7000	7000	7000	7000	7000	7000	7000	7000	7000	7000	7000
	18	14000	14000	14000	14000	14000	14000	14000	14000	12389	9860	7000	7000	7000	7000	7000	7000	7000	7000	7000	7000	7000
	20	14000	14000	14000	14000	14000	14000	14000	12714	10962	8698	7000	7000	7000	7000	7000	7000	7000	7000	7000	7000	7000
	22	14000	14000	14000	14000	14000	13925	12675	11392	9806	7758	7000	7000	7000	7000	7000	7000	7000	7000	7000	7000	7000
	24	13700	13619	13450	13258	12873	12612	11471	10299	8851	6981	7000	7000	7000	7000	7000	7000	7000	7000	7000	7000	6981
	26	12510	12436	12280	12104	11749	11509	10459	9381	8049	6329	7000	7000	7000	7000	7000	7000	7000	7000	7000	7000	6192
	28	11496	11428	11283	11120	10792	10570	9597	8599	7366	5773	7000	7000	7000	7000	7000	7000	7000	7000	7000	7000	5684
	30	10622	10558	10424	10272	9967	9760	8855	7925	6777	5294	7000	7000	7000	7000	7000	7000	7000	7000	7000	6756	5245
	32	9861	9801	9676	9534	9248	9054	8208	7338	6264	4877	7000	7000	7000	7000	7000	7000	7000	7000	7000	6277	4863
	34	9192	9136	9018	8885	8616	8434	7639	6822	5813	4510	7000	7000	7000	7000	7000	7000	7000	7000	7000	5856	4528
	36	8600	8547	8436	8310	8057	7885	7135	6365	5414	4185	7000	7000	7000	7000	7000	7000	7000	6567	5483	4231	
	38		8022	7916	7797	7558	7396	6686	5958	5058	3895		7000	7000	7000	7000	7000	7000	6176	5150	3966	
	40		7550	7450	7337	7110	6956	6283	5592	4738	3635		7000	7000	7000	7000	7000	6615	5825	4851	3728	
	42			7029	6922	6706	6560	5919	5262	4450	3401			7000	7000	7000	6915	6259	5508	4582	3513	
	44			6648	6545	6339	6200	5589	4962	4188	3188			7000	6931	6711	6562	5937	5220	4337	3319	
	46			6300	6202	6005	5872	5289	4690	3950	2994			6700	6593	6383	6240	5643	4959	4115	3141	
	48				5888	5700	5572	5014	4440	3732	2817				6284	6083	5946	5374	4719	3911	2979	
	50				5600	5419	5297	4761	4211	3531	2654				6000	5807	5676	5128	4499	3724	2830	
	52					5161	5043	4528	4000	3347	2504					5553	5427	4900	4296	3552	2693	
54					4922	4808	4313	3805	3176	2365					5318	5197	4690	4109	3392	2566		
56					4700	4591	4114	3624	3018	2236					5100	4983	4495	3935	3244	2448		
58						4389	3928	3455	2871	2116						4785	4314	3773	3107	2338		
60						4200	3755	3298	2734	2005						4600	4145	3622	2979	2236		
62							3593	3152	2606	1901							3987	3482	2859	2141		
64							3442	3014	2486	1803							3839	3350	2747	2052		
66							3300	2885	2373	1711							3700	3226	2642	1968		
68								2764	2267	1625								3110	2543	1889		
70									2650	2167	1544								3000	2450	1815	
72										2073	1468									2362	1745	
74										1984	1395									2272	1679	
76										1900	1327									2200	1616	
78											1262										1556	
80											1200										1500	

Con sistema "ULTRALIFT" tutte le portate intermedie sono aumentate dei 10%

All intermediate loads are increased of 10% if the crane is equipped with "ULTRALIFT" control


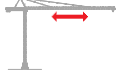

Les charges intermédiaires sont augmentées de 10% si la grue est équipée avec contrôle "ULTRALIFT"




Con sistema ULTRALIFT todas las capacidades de carga intermedias se aumentan un 10%

При помощи системы ULTRALIFT все промежуточные величины грузоподъемности увеличиваются на 10%

CARATTERISTICHE AZIONAMENTI PRINCIPALI

GENERAL TECHNICAL CHARACTERISTICS - CARATERISTIQUES DES MECHANISMES DE DISTRIBUTION
CARACTERÍSTICAS ACCIONAMIENTOS PRINCIPALES - ХАРАКТЕРИСТИКИ ОСНОВНЫХ ПРИВОДОВ

		Velocità - Speed Vitesse - Velocidad Скорость	Potenza - Power Puissance - Potencia Мощность
Rotazione - Slewing Orientation - Rotación Вращение		0,26 / 0,48 / 0,7 min ⁻¹	4 x 4 Kw
Carrello - Trolley Chariot - Carro Тележка		13 / 35 / 56 m/min Progressivo - Progressive	6,6 Kw
Traslazione - Rail Translation - Traslación Горизонтальное перемещение		19 m/min	4 x 4 Kw

Tipo Type Тип		Potenza - Power Puissance - Potencia Мощность		Fune - Rope Cable - Cable Трос m.	Marcia Step Vitesse Marcha Передача				
		CV - ch Ps - hp	kW			Carico - Load Charge - Carga Груз Kg.	Velocità - Speed Vitesse - Velocidad Скорость m/min.	Carico - Load Charge - Carga Груз Kg.	Velocità - Speed Vitesse - Velocidad Скорость m/min.
		60 HP - 5/10 VF	60			45	450 LB	1	5000
				2	5000	18	10000	9	9
				3	5000	30	10000	15	15
				4	3500	48	7000	24	24
				5	2400	60	4800	30	30
					0 - 750 (*)	80 (*)	0 - 1500 (*)	40 (*)	40 (*)
75 HP - 6/12 VF	75	55	500 LB	1	6000	8	12000	4	4
				2	6000	24	12000	12	12
				3	6000	40	12000	20	20
				4	3600	64	7200	32	32
				5	2500	80	5000	40	40
					0 - 1000 (*)	104 (*)	0 - 2000 (*)	52 (*)	52 (*)
75 HP - 7/14 VF	75	55	500 LB	1	7000	8	14000	4	4
				2	7000	24	14000	12	12
				3	7000	40	14000	20	20
				4	3600	64	7200	32	32
				5	2500	80	5000	40	40
					0 - 1000 (*)	104 (*)	0 - 2000 (*)	52 (*)	52 (*)
75 HP - 8/16 VF	75	55	450 LB	1	8000	6	16000	3	3
				2	8000	20	16000	10	10
				3	8000	34	16000	17	17
				4	4000	52	8000	26	26
				5	2500	70	5000	35	35
					0 - 1200 (*)	84 (*)	0 - 2400 (*)	42 (*)	42 (*)
100 HP - 7/14 VF	100	73,5	700 LB	1	7000	8	14000	4	4
				2	7000	30	14000	15	15
				3	7000	52	14000	26	26
				4	3750	92	7500	46	46
				5	2500	136	5000	68	68
100 HP - 8/16 VF	100	73,5	700 LB	1	8000	8	16000	4	4
				2	8000	30	16000	15	15
				3	8000	52	16000	26	26
				4	4000	92	8000	46	46
				5	2500	136	5000	68	68

(*) Velocità regolata automaticamente tramite sensore di corrente

Conforme alla direttiva 2000/14/CE sul livello acustico - In compliance with the 2000/14/CE instruction on noise level - Conforme directive 2000/14/CE sur le niveau acoustique
Conforme con la directive 2000/14/CE sobre el nivel acustico - Соответствует директиве Евросоюза 2000/14/CE о шумовых показателях

Forza motrice totale Total installed power Puissance totale des moteurs Fuerza motriz total Общая движущая сила	45 kW (60HP)	55 kW (75HP)	73,5 kW (100HP)
	84 kW	94 kW	112 kW

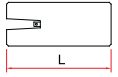
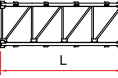
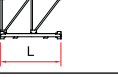
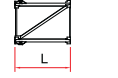
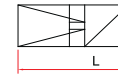

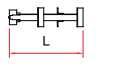
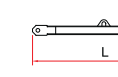
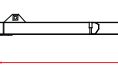
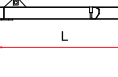
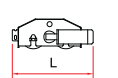
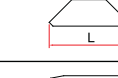
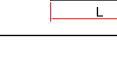
PESI E INGOMBRI

PACKING LIST - LISTE DE COLISAGE - PESOS Y DIMENSIONES - ВЕС И ГАБАРИТНЫЕ РАЗМЕРЫ

Pos. Item	Pezzi Pieces	Denominazione Description	Schizzo Sketch	Dimensioni Dimensions			Peso Weight		
				L	W	H	Unit	Total	
1	1	Elemento di freccia Jib element Elément deèche Elemento de flecha Элемент стрелы	n° 1		6,200	1,500	1,670	941	-
	2		n° 2-5		6,240	1,500	1,670	895	-
	1		n° 3		4,240	1,500	1,670	602	-
	1		n° 4		6,240	1,500	1,670	1000	-
	4		n° 6-7 7A-8		6,240	1,500	1,650	745	-
	1		n° 9		6,240	1,500	1,650	813	-
	2		n° 10-11		6,240	1,500	1,630	560	-
	1		n° 12		4,200	1,500	1,610	328	-
	1		n° 13		2,210	1,500	1,610	178	-
	1	Puntale freccia Jib point - Elément pointe Puntal de flecha - Наконечник стрелы		0,740	1,510	0,340	78	-	
2	1	Cuspide A frame - Pointe Cúspide - Шпиль		9,500	1,550	0,800	3500	-	
3	1	Elemento controfreccia esterno porta argano sollevamento External counterjib section with hoisting winch Contrefleche extérieure porte treuil Elemento contraflecha externa porta cabrestante elevación Наружный элемент контрстрелы, несущий подъемную лебедку		7,100	2,270	2,040	3600	-	
4	1	Elemento interno controfreccia Internal counterjib section Contrefleche intérieure Elemento interno contraflecha Внутренний элемент контрстрелы		11,830	2,270	1,100	2100	-	
5	1	Controfreccia completa Complete counterjib Contrefleche complète Contraflecha completa Полная контрстрела		18,830	2,270	2,040	7000	-	
6	1	Coda telaio girevole Switchboard support frame Support de l'armoire électrique Cola bastidor giratoria Поворотный хвост станины		2,470	1,700	2,530	1300	-	
7	1	Gruppo rotazione Slewing table Table tournante Grupo rotación Узел вращения		2,300	2,540	2,270	5500	-	
8	1	Ballatoio cabina, cabina access balcony, cabin Porte cabine Balcón corrido cabina, cabina Площадка кабины, кабина		2,400	2,000	2,300	750	-	
9	1	Assieme montato pos. 6-7-8 assembly of pos. 6-7-8 Groupe 6-7-8 Conjunto montado pos. 6-7-8 Собранный узел поз. 6-7-8		4,890	4,240	3,350	8000	-	

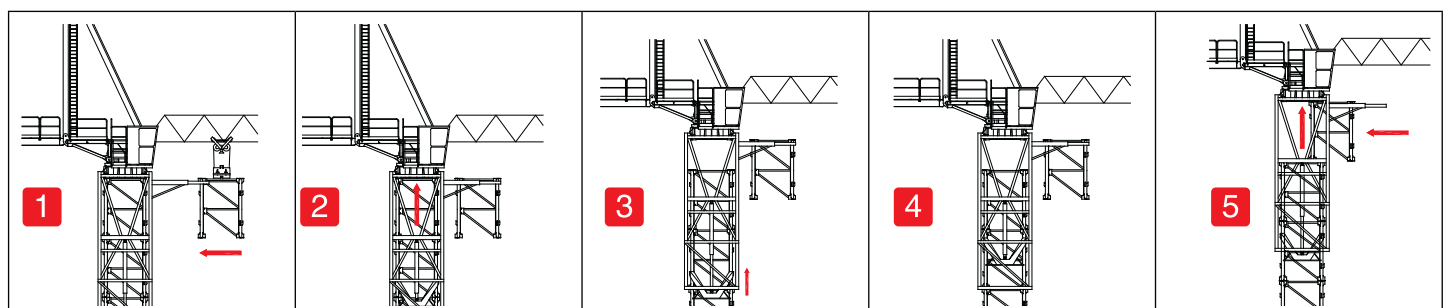
PESI E INGOMBRI

PACKING LIST - LISTE DE COLISAGE - PESOS Y DIMENSIONES - ВЕС И ГАБАРИТНЫЕ РАЗМЕРЫ

Pos. Item	Pezzi Pieces	Denominazione Description	Schizzo Sketch	Dimensioni Dimensions			Peso Weight		
				L	W	H	Uni t	Total	
10	12	Blocchi di contrappeso Counterweight block Contre-poids Bloques de contrapeso Блоки противовеса		AW	2,870	1,200	0,275	2022	24264
11	-	Elemento di torre Tower element Element de mature Elemento de torre Башенный элемент			6,000	2,300	2,300	3450	-
12	-				3,000	2,300	2,300	1900	-
13	1	Elemento di base Base element Mat de base Elemento de base Элемент основания			3,000	2,400	2,400	1950	-
14	1	Gabbia di montaggio Climbing cage Cage de montage Jaula de montaje Монтажная клеть			8,530	3,100	2,300	7670	-
15	1	Tronchetto di fondazione Expendable foundation element Element a sceller Tronco de fundación Фундаментный элемент			1,820	2,400	2,400	1370	-
16	4	Gambe di fondazione Fixing angles Pieds de scellement Patas de fundación Ножки основания			1,820	0,470	0,470	280	1120
17	4	Puntoni di base Oblique legs Jambes de force Cabrjos de base Стойки основания			3,770	0,230	0,260	340	1360
18	1	Trave principale della crociera di base Base main beam Poutre de chassiss de base Viga principal de la cruceta de base Главная балка крестовины основания			8,900	0,720	0,760	1650	-
19	2	Semitrave della crociera di base Half base beam Semipoutre de chassiss de base Media viga de la cruceta de base Полубалка крестовины основания			4,350	0,600	0,760	750	1500
20	4	Bilancino di traslazione motorizzato Driven bogie Boggie motorisee Balancin de traslación motorizado Приводной балансир горизонтального перемещения			1,750	0,705	0,790	1000	4000
21	1	Blocco di zavorra Base ballast block Lest de base Bloque de lastre Блок балласта		3G	4,200	0,320	1,400	3230	- -
	2			3H	5,200	0,400	1,400	6,240	- -

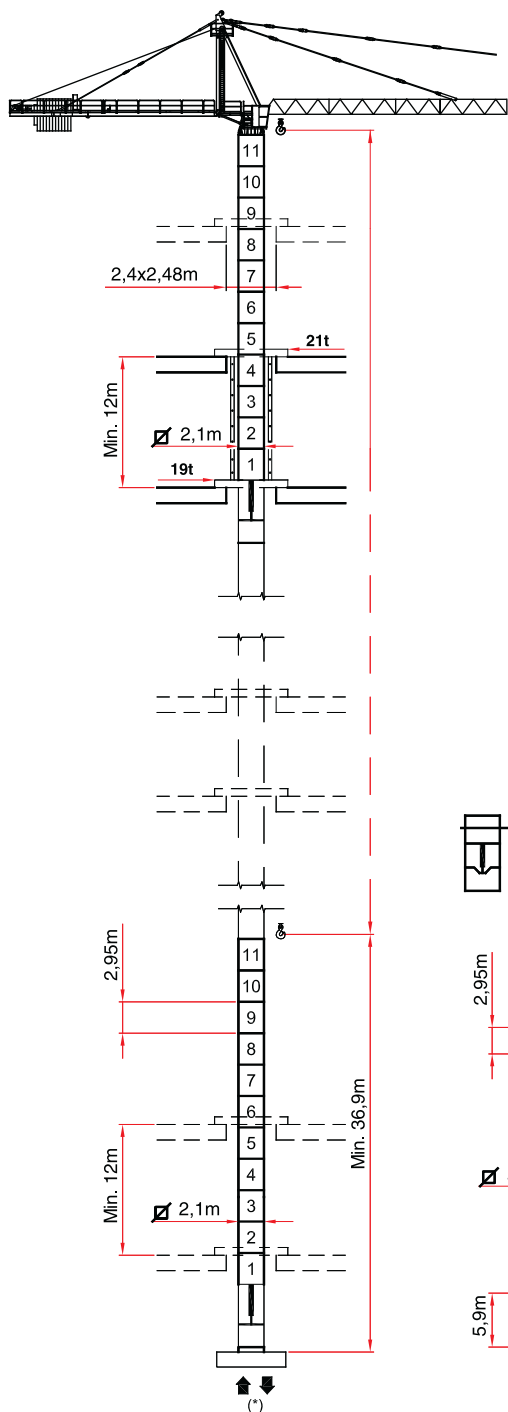
Sequenza di sopralzo

Climbing sequence - Cycle de telescopage - Secuencia de sobreelevación - Порядок повышения



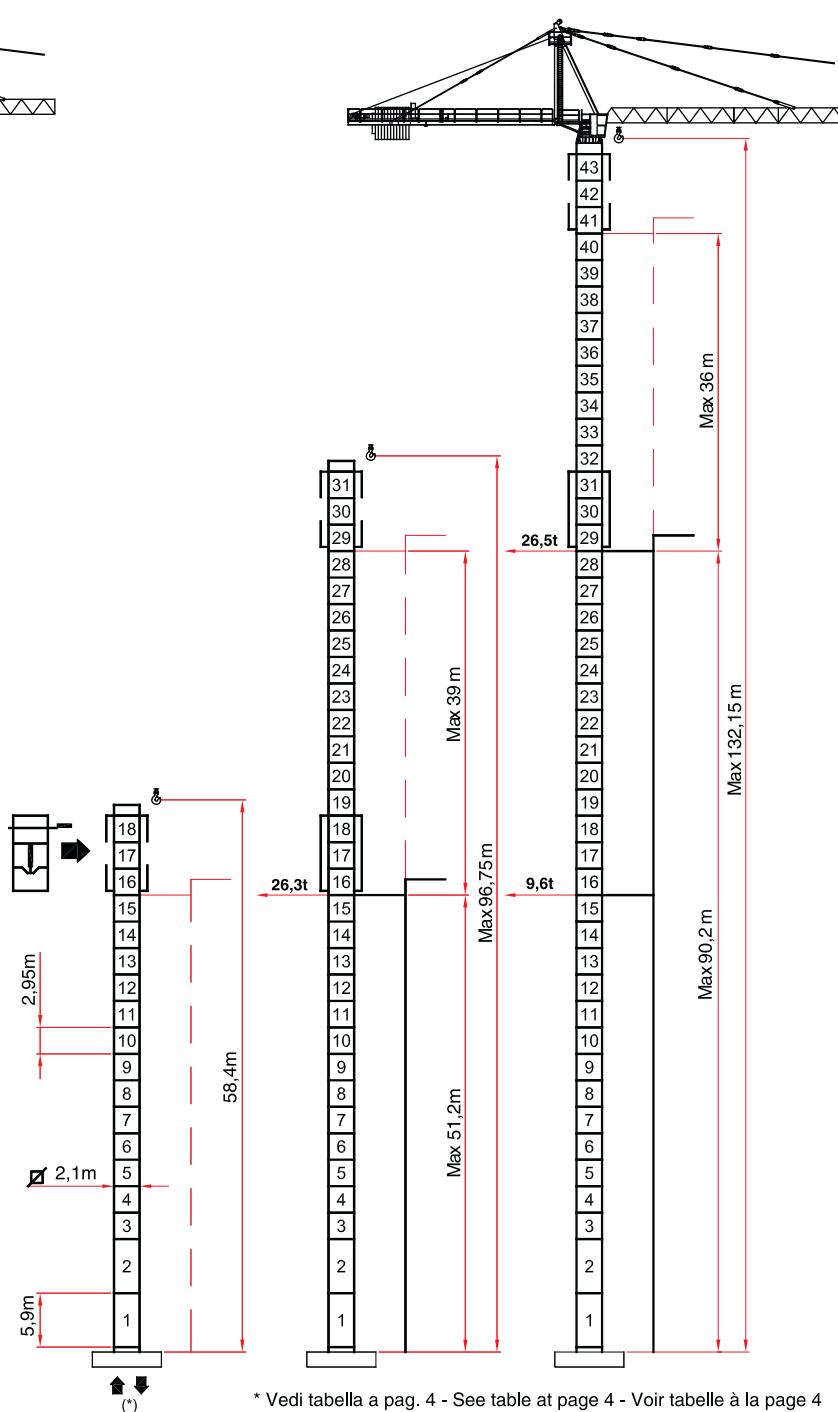
RAMPANTE RI - 2,1 / 45

FLOOR CLIMBING
TELESCOPABLE SUR DALLES
RAMPANTE
Поднимающийся на плитах перекрытия



SOPRALZO IDRAULICO HC - 2,1 / 45

EXTERNAL CLIMBING
TELESCOPABLE
SOBREELEVACIÓN HIDRÁULICA
ГИДРАВЛИЧЕСКОЕ ПОВЫШЕНИЕ



* Vedi tabella a pag. 4 - See table at page 4 - Voir table à la page 4

I dati riportati possono essere soggetti a modifiche senza preavviso



CARLO RAIMONDI fu Rodolfo S.p.A.
C.so Garibaldi, 253 - 20025 Legnano (MI) Italy
Telefono 0039.0331.548061 - Fax 0039.0331.450400
www.raimondigru.it